

NZ WOOL CLASSERS ASSOCIATION

JULY 2019 NEWSLETTER



Registrar Report Bruce Abbott A1457

Bruce Classing at Oturehua, July 2019

Over my time as your EO/R I have always tried to have a positive outlook and endeavour to make changes/improvement to the services we supply not only to our members but also to the wool harvesting industry.

—Click below to read more —

http://www.woolclassers.org.nz/images/newsletters/July2019/Article_1.pdf



NZWCA Chairman's Report Bill Dowle D1076



—Click below to read more —

http://www.woolclassers.org.nz/images/newsletters/July2019/Article_2.pdf

PROUDLY SPONSORED BY NEW ZEALAND
FEDERATED WOOL MERCHANTS





New NZWCA Board Members

We thank both Vivienne Lewis and Rob Cochrane (Brokers Rep) for their contribution over the past few years, their input has been invaluable to the progress that has been made over the years of their involvement.

We welcome Margaret Forde representing classers and Roger Fuller of C P Wool representing the brokers to our board. We look forward to the contribution they can make.

Marg Forde - A1260



"I strongly believe NZWCA is fundamental to enhancing the profile of wool classers and protecting the integrity of what our hard-earned stencil represents. I commend the NZWCA effort put into continuing the wool training platform. I see my board focus being on classer members out there at the coal face. For most, classing is a seasonal thing and must be combined with other income streams. The wool industry relies on the passion of classers to do the juggle and stay in the game, so support for and recognition of the knowledge base and commitment of experienced classers is important, in my opinion. Formerly a qualified working journalist, I first wool handled in main shear 1984. In 1987 I went to Lincoln for wool classing studies. I've been combining writing and (South Island) classing since then, with motherhood added into the equation from 1995. My husband Edsel and I have two sons; we've been based in the Waikato since 2001."

Roger Fuller - Broker Representative

My name is Roger Fuller and I am employed with CP Wool based in Christchurch as a Supply Relationship Manager and South Island Wool Auctioneer.

I have had 40 years in the wool industry working for Wrightson then with Elders Primary Wool and lately with CP Wool in the Canterbury, Marlborough and Otago Regions.

Many changes have occurred over this period but the fundamentals are still the same. Wool preparation, wool classing/grading and wool quality are as important as ever. Being the Broker representative on the NZWCA I intend to insure that these important areas continue to be addressed and the high standards are maintained.



We need to continue to attract younger people to the industry, therefore maintaining a good training program is a must.

Dealing with farmers and industry people who are very passionate towards wool has been a highlight for me and I look forward to my time on the association.

PROUDLY SPONSORED BY NEW ZEALAND
FEDERATED WOOL MERCHANTS





CONTAMINATION

Major industry problem
Non Wool Contamination in greasy bales



NZWCA Vice Chairman Struan Hulme

—Click below to read more —

http://www.woolclassers.org.nz/images/newsletters/July2019/Article_3.pdf

Broker News Get the Basics Right



Rob Cochrane
Wool Procurement Manager
PGG Wrightson Wool

—Click below to read more —

http://www.woolclassers.org.nz/images/newsletters/July2019/Article_4.pdf





Very Important: Removal of seed

This season we expect higher than usual grass/seed contamination to be evident from most areas and it must be removed. We are already seeing more horehound and grasses in some areas.

All grass and hay and some seeds lie parallel to the fibre and are very difficult to remove during the manufacturing process. If there is any doubt this contamination must be removed.



Horehound in belly wool

Selling at auction

This coming season if you are classing a clip that is going to auction it is important that the clip receives a full preparation (remove that seed/grass) and best possible classing as this will add value.

PROUDLY SPONSORED BY NEW ZEALAND
FEDERATED WOOL MERCHANTS





Pre-lamb Preparation 2019/2020 Season



Key Messages from
Blair Davies
Asst Commercial & Area
Manager
New Zealand Merino

—Click below to read more —

http://www.woolclassers.org.nz/images/newsletters/July2019/Article_5.pdf

Prepare Thy Self Barbara Newton



Personal preparation for pre-lamb,
'Cos let's be honest' this is what classing is all about

—Click below to read more —

http://www.woolclassers.org.nz/images/newsletters/July2019/Article_6.pdf



NZ WOOL CLASSERS ASSOCIATION

JULY 2019 NEWSLETTER



New Zealand Wool Classers Association 2018 Merit Awards

–Click below to read more –

http://www.woolclassers.org.nz/images/newsletters/July2019/Article_7.pdf



Classer Profile
Nic Blanchard
D2041

Merit award acknowledges shepherd's class

By Sally Rae
Otago Daily Times

ODT
Otago Daily Times

–Click below to read more –

http://www.woolclassers.org.nz/images/newsletters/July2019/Article_8.pdf

PROUDLY SPONSORED BY NEW ZEALAND
FEDERATED WOOL MERCHANTS





Creating good staff relations, becoming a better (shed) classer.

In addition to being competent for the job at hand we need to be able to communicate with a wide range of people be it contractor, grower, broker, and wool harvesting staff.

Being non-judgemental, showing respect, having a positive attitude, good communication, pride in the job and people skills are paramount for a good classer.

These are just as applicable to owner classers who only experience the shed environment on a more limited capacity. But you would struggle to find anyone more passionate about classing than an owner classer!

Improving practical classing skills can generally be learnt by experience, trial and error, using test results, conferring with other classers, brokers exporters etc. Don't be shy in coming forward with questions, no matter how insignificant it may seem.

There is no need to be everybody's friend! A lot of classers who have come through the wool handling pathway need to learn to be the classer and learn to separate yourself apart. No longer the head wool handler you must be able to put that aside and concentrate on your own job, working for the grower. Yes you have overall responsibility for the preparation but delegate.

If you have a problem or foresee one don't deal with it personally. Direct it through the correct channels be it to the ganger, head wool handler, or grower, or all who can address it with the contractor /employer. Don't get involved in petty goings on in the gang. You have to be above that.



Working in a confined environment with a group of people you may or may not know can be challenging at times. It is important to deal with any issues appropriately. Think before you act or speak, support, encourage and set a good example.

If you're having a great day don't be shy in letting everyone around you know that.

Barbara Newton

**PROUDLY SPONSORED BY NEW ZEALAND
FEDERATED WOOL MERCHANTS**





Professionalism



“

"The key to quality and efficiency is professionalism."

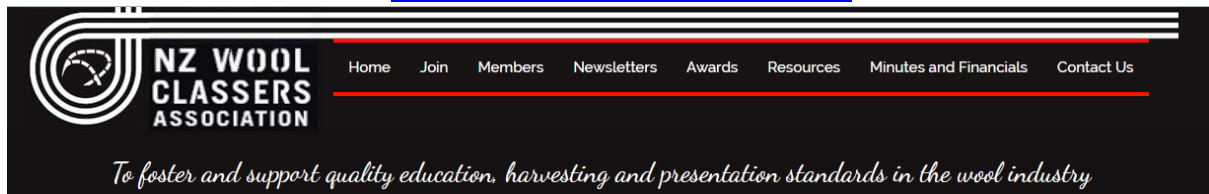
Anonymous

—Click below to read more —

http://www.woolclassers.org.nz/images/newsletters/July2019/Article_9.pdf

Web Site

www.woolclassers.co.nz



Recently we have upgraded the forms that are required to:

- Request forms for a shed management report and classing/grading report.
- Classing report, grading report and shed management report. These are to be carried out by NZWCA approved wool representative.
- Also there is now a form (Q & P Requirements) that outlines the requirement to upgrade your stencil (classing and grading).

These forms are on our web site under resources/report forms.

<https://www.woolclassers.org.nz/resources/forms>

We would like to see more members upload your details/photo on your profile. If you have lost your input number to enable you to carry this out, contact our secretary Annette on secretary@woolclassers.org.nz to get your input code reissued.

PROUDLY SPONSORED BY NEW ZEALAND
FEDERATED WOOL MERCHANTS



NZ WOOL CLASSERS ASSOCIATION

JULY 2019 NEWSLETTER



Wool Research of New Zealand (WRONZ) & NZ Wool Classers Association Scholarships awarded for the Wool Technology Course

These scholarships have been made available by WRONZ who are contributing \$5000 each year. Our association acknowledges this very important contribution to assist students to complete the wool course.

The following students have been awarded the above scholarship on confirmation of acceptance and payment of their course fees.

Students that started their course in 2018:

Malcolm Dillon, Marc Ludlow, Olivia McCorkindale, Jenna McLellan and Ella Caves.

These students will receive two payments of \$250 during their 2019 studies

Students that started their course in 2019:

Mecaela Lynch, Ingrid Neera, Christie Burn, and Logan Kamura.

These student will receive 4 payments of \$250 during their 2019/20 studies
Congratulations to all and commiserations to those who missed out. We wish you well in your endeavors in completing and passing this course.



**Certificate in Wool, presented by SIT
To View Course details click on link**

<https://www.sit.ac.nz/programme/id/11405/xmps/1441>

*There has been considerable interest for the 18 month
Certificate in Wool which starts in mid-July 2019*

**PROUDLY SPONSORED BY NEW ZEALAND
FEDERATED WOOL MERCHANTS**





Field Day

We had a very successful industry day in Timaru on the 9th May. Eighty six people attended including not only wool classers but a mixture of people from different parts of our industry. They were all treated with interesting speakers and a lot of time was spent on going through the wool samples and exercises on display; the opportunity to tour through the Canterbury wool scour; and overall the comments we received for the day were positive not only for our members but from other people in the wool industry.



Future dates

At this time we do not have confirmed date for future days but are in the planning stage for days in a wool shed in Lumsden (November), North Canterbury (early October) and Balclutha (timing to be confirmed).

We (NZWCA) are not holding days in the North Island this year as we have been advised that other organisations have been holding sessions up there and we would only be repeating what has already been done.

**PROUDLY SPONSORED BY NEW ZEALAND
FEDERATED WOOL MERCHANTS**



NZ WOOL CLASSERS ASSOCIATION

JULY 2019 NEWSLETTER



National Council of New Zealand Wool Interest (NCoNZWI)

We pleased to report that your association has been invited and accepted as an observer to the NCoNZWI for the next 12 months. This will enable the association to attend their meetings and receive relevant documentation and communication. At this time no membership fee will be required. This arrangement will come up for review at the end of 12 months and if satisfactory to both parties it can continue and a membership fee be established. By joining this organisation it will enable the NZWCA to participate in discussion involving the wool industry.

This body is a member of the IWTO, so an important connection to the wool fraternity globally.

Clipping of Bales

I have been through a few wool stores recently and have observed that the clipping of bales appears to have improved.

The main points that the industry need to get across to pressers and farmers is (1) to have the seam of the pack at the top edge of the box, (2) before final press the top is flattened off and (3) when clipping make sure that the side edges are even. There are a lot of opinions of how to do the final clipping of the last two flaps. Four straight across or two (either side of label) and one down either side of the bale. This is my preferred option

Bruce Abbott, NZWCA Executive Officer A1457

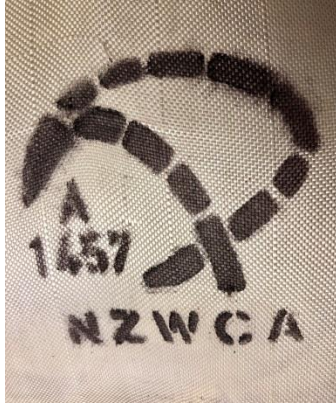
REMINDER: JUST PAPER TO BE USED IN DIVISIONS FOR BIN BALES

PROUDLY SPONSORED BY NEW ZEALAND
FEDERATED WOOL MERCHANTS





Registration Metal Stencils



This is a re-introduced way of marking the bales where you have had an input in preparing the wool. Twenty five classers took up the initial opportunity to purchase a stencil at a cost of \$25 each incl. GST

We intend to do a further run of these when we have an order for 15 or more.

If you should like one please advise Bruce,
deposit \$25 into bank account

02 0828 0036732 00

Ref: Your Name Code: Your Stencil Number



WELL DONE TO:

**Shirley Munro who would have to be
first out of the blocks with the use of
her new stencil recently**



PROUDLY SPONSORED BY NEW ZEALAND
FEDERATED WOOL MERCHANTS



NZ WOOL CLASSERS ASSOCIATION

JULY 2019 NEWSLETTER



2019 SUBS – have you paid yet?

**You are unable to use your stencil number
unless you are a financial member of this association**

–Click below to read more –

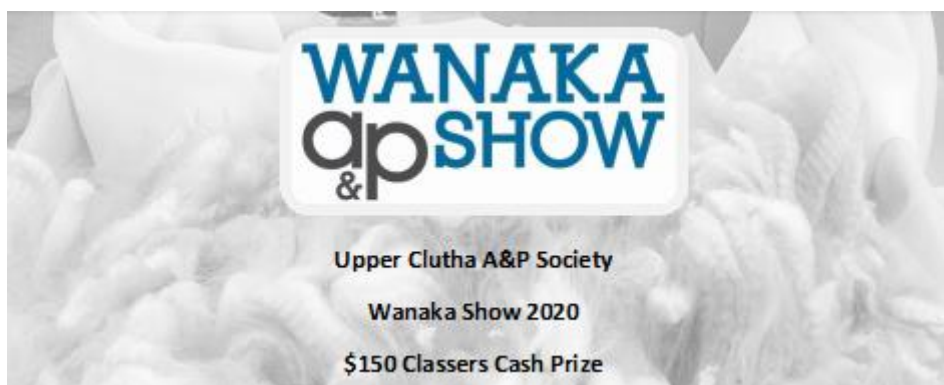
http://www.woolclassers.org.nz/images/newsletters/July2019/Article_10.pdf

Showcasing your client's product

A reminder to keep an eye open and take out a fleece or more to enter in the local A & P show, &/or to enter two other great competitions, the Otago Merino Association Cancer Fleece Comp, and the Wanaka Show

–Click below to read more –

http://www.woolclassers.org.nz/images/newsletters/July2019/Article_11.pdf



PROUDLY SPONSORED BY NEW ZEALAND
FEDERATED WOOL MERCHANTS



NZ WOOL CLASSERS ASSOCIATION

JULY 2019 NEWSLETTER



**HOT
OF THE
PRESS!**

**HOT
OF THE
PRESS!**

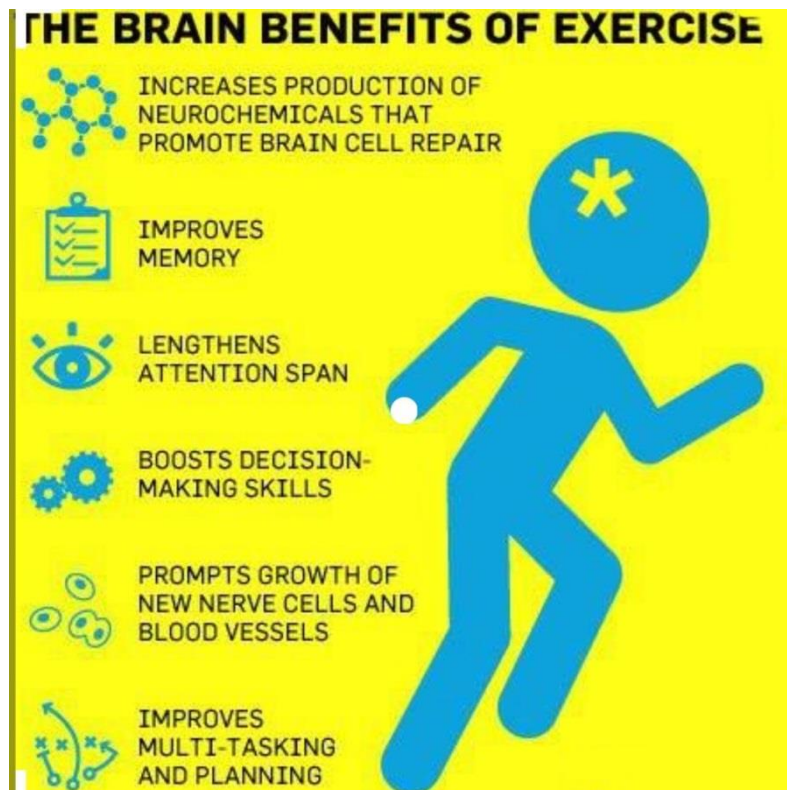
**HOT
OF THE
PRESS!**

World Shearing and Wool handling Championship's

—Click below to read more—

http://www.woolclassers.org.nz/images/newsletters/July2019/Article_12.pdf

LASTLY REMEMBER:



PROUDLY SPONSORED BY NEW ZEALAND
FEDERATED WOOL MERCHANTS





Invitation to become an Associate Director

The New Zealand Wool Classers Association Incorporated (NZWCA) wishes to offer the opportunity for registered wool classer members to become an “Associate Director”.

The objective is to support potential members of the NZWCA Board of Directors through providing a period of preparation that will assist them to perform successfully should they go on to stand as a Director.

If successful, the appointee serves at the will of the Chairman and may be appointed for renewable one-year terms. The Chairman will ensure the development of orientation and training programs for any Associate Board Director.

To be appointed as an Associate Director (and to continue serving), an individual must:

- Be a registered classer member of NZWCA.
- Display an interest in NZWCA and a willingness to serve its members through Board activities.
- Be willing and able to devote the time and effort it takes to serve as an Associate,- attendance at two face to face meetings, attend an industry field day and participate in 2-3 conference calls
- Demonstrate that he/she is a team player who exercises sound judgment.



If interested, please contact:

Bill Dowle

Chairman

029 358 3175

PROUDLY SPONSORED BY NEW ZEALAND
FEDERATED WOOL MERCHANTS

